

Norwich Theatre Royal

Technical Specifications

Updated 18.08.21



Norwich Theatre Royal
Theatre Street
Norwich,
Norfolk.
NR2 1RL.

t. 01603 598500
f. 01603 598501

www.norwichtheatre.org

Contents

Contacts	Technical Staff, Other Contacts
General Information	Building/Auditorium, How to find us, Deliveries, Parking, Dressing Rooms, Wardrobe, Orchestra Pit, Accessibility Aids.
Stage	Dimensions, Flying System, Chain Hoists and Truss, Soft Goods, Prompt Corner, Access Equipment, Rostra, Piano.
Lighting	Lighting Desk, Racks, Non Dims, D.M.X., Ethernet, Follow Spots, Colour & Gobos, Dimensions, Power.
Sound	Desk, Playback, FOH Speakers, Monitor Speakers, Electronic Architecture, Audio Tie Lines, Speaker Tie Lines, Radio Mics, Comms., Touring Mixer
Video	Video Tie Lines, Stage Picture, Pit Monitors, Cameras.
Equipment List	Lighting Equipment, Audio and Video Equipment, Stage Equipment.
Health and Safety	Policy, C.D.M, Paperwork, Smoking on Stage, Fire Safety, Working Areas.
Plans	Ground Plan, Section, FOH LX Plan, Seating Plan, Hanging Plot.

Contacts

Technical Staff

Technical and Buildings Director	Will Hill	01603 598550 will.hill@norwichtheatre.org
Head of Stage	Mark Bobbitt	01603 598500 mark.bobbitt@norwichtheatre.org
Head of Lighting	Darren Male	01603 598500 darren.male@norwichtheatre.org
Head of Sound & AV	Darren Fuller	01603 598500 darren.fuller@norwichtheatre.org
Senior Technician (Stage and Facilities)	Richard Ducker	
Senior Technician (Lighting)	Kyle Fuller	
Senior Technician (Sound and AV)	Dec Matwij	technical@norwichtheatre.org

Other Contacts

Visitor Services Manager (New name for F.O.H.!!)	Will Fincher	01603 598578 will.fincher@norwichtheatre.org
Stage Door		01603 598500

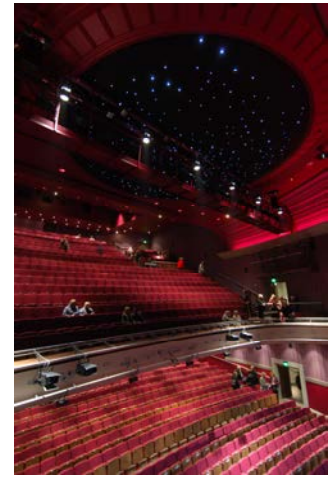
General Information

Building / Auditorium

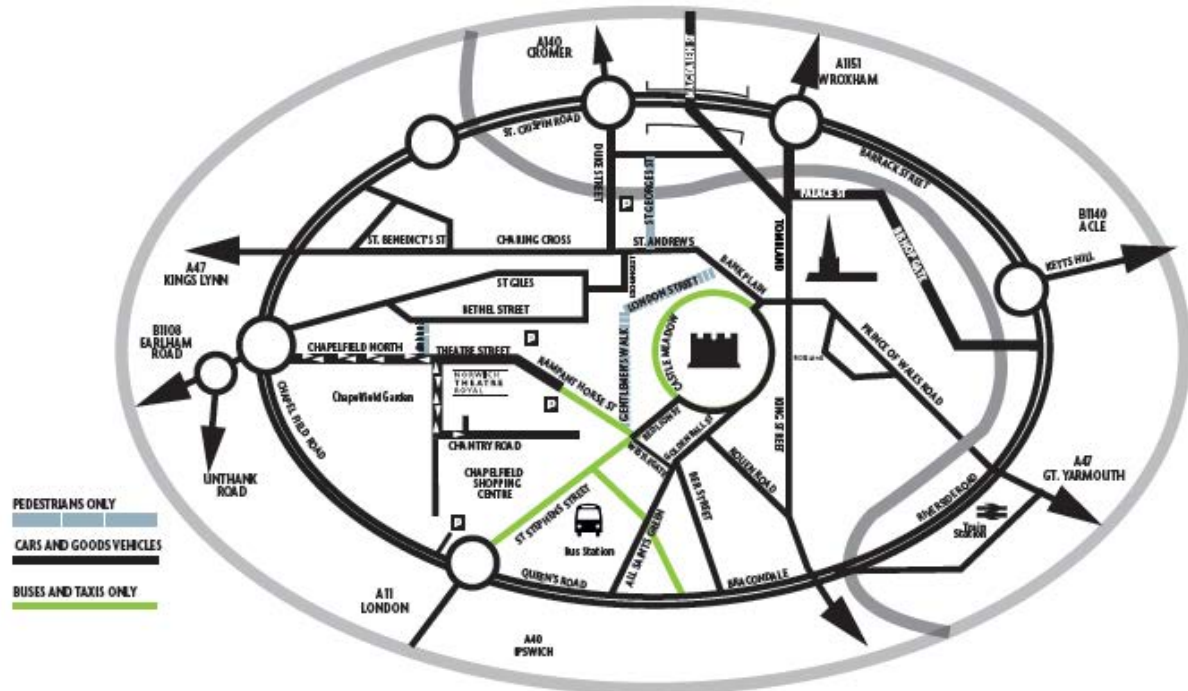
There has been a theatre on the site of the Theatre Royal since 1758. The current building was constructed in 1935. The most recent major refurbishment was completed in October 2007.

The Theatre Royal is Norwich, Norfolk and East Anglia's premier theatre presenting a high quality mix of comedy, drama, musicals, dance, opera, music and family shows all year round.

The auditorium is arranged on two levels, with a shallow raked stalls (626 seats) and a steeply raked circle (682 seats), giving an audience capacity of 1308.



How to find us . . .



Directions: From the Chapel Field roundabout take Chapel Field North along the side of Chapel Field Park. At the end of the park turn right onto Chapel Field East and then first left onto Chantry Road.

Passenger Vehicles: Limited parking spaces may be available on our side and rear car parks by arrangement via your Company or Tour manager or with our Stage Door Keeper or Technical and Buildings Director. There are also numerous pay and display Car Parks nearby. Vehicles parked without permission may be subject to a penalty charge notice.

Delivery Vehicles Scenic deliveries are via the scene dock at the rear of the theatre. The dock doors are at the far end of our rear car park approximately 13m from the road. Parking for four 40' trailers for In and Out only. Trailers may be left by arrangement.

Dressing Rooms

Floor	Name	Capacity	Facilities						
			WC	Shower	Bath	Phone 01603	Fridge	TV	Wi-Fi
Ground Floor	Kemp Room	2	✓	✓	✓	598650	✓	✓	✓ _{Cat 5}
	1	2	✓	✓		Ext 651	✓	✓	✓
	2	2	✓	✓		Ext 652	✓	✓	✓
First Floor	3	4	✓	✓		Ext 653	✓	✓	✓
	4	4	✓	✓		Ext 654	✓	✓	✓
	5	2	✓	✓		598655	✓	✓	✓ _{Cat 5}
	Ch A	15	✓ x 2	✓ x 2		Ext 661	✓	✓	✓
	Ch B	15	✓ x 2	✓ x 2		Ext 662	✓	✓	✓
	Ch C	9				Ext 663	✓	✓	✓
Second Floor	6	3	✓ adjacent	✓ adjacent		Ext 656	✓	✓	✓
	7	4	✓ adjacent	✓ adjacent		Ext 657	✓	✓	✓
	8	4	✓ adjacent	✓ adjacent		Ext 658	✓	✓	✓
Basement	Band Room 1	6				Ext 664		✓	✓
	Band Room 2	6				Ext 665		✓	✓
	Band Room 3	2	✓ adjacent			598659	✓	✓	✓ _{Cat 5}

Dressing Room No.5, Kemp Room or Band Room 3 are usual options for a Company Office. Dressing Room Plan available by request. A Photocopier is available for reasonable use in our Administration Offices.

Most back stage areas have free WiFi coverage on NTRGuest. Password “footlights”

The TV system carries a full digital system, and the Stage picture.

Wardrobe

At Stage level, direct access from Get In and adjacent to Stage Door. 2 x Miele Stacked industrial Washer/Driers (PW6065/PT7136). Coin Op Washers (£2), Dryers (50p). Plumbing for two touring Washing Machines. TV & Fridge Freezer. An Iron and Ironing Board are available by request.

Orchestra Pit

The pit can accommodate various sizes of band and orchestra. All sizes involve seat removal. Contact us for further details if required. We have 44 Orchestra chairs.

Accessibility Aids

Two Stagertext caption screens rigged off pros. booms. An induction loop system covering the auditorium. A radio assisted listening/audio description system running on four frequencies on Channel 70. Dedicated Audio Description position in Lighting Control Room.

STAGE

Access Off road parking at street level. Roller Shutter Door leads to Scene Dock. Direct access to Stage Right wing via ramped Mid Dock. We have a 2 x 4m Truck Ramp. Smallest dimension on Get In route is 4300mm height and 2700mm width

Stage The Stage is flat and consists of 6mm oil tempered hardboard on a 42mm of birch ply. It is painted Matt Black.

Dimensions

Stage Front to Setting Line	=	1.09m (3'7")
Setting Line to Back Wall	=	11.08m (36'5")
Pros. Width	=	9.68m (31'9")
Pros. Height	=	7.11m (23' 4")
Grid Height	=	18.67m (61'3")
Flying Height	=	18.30m (60')
Dock Doors	=	4.35m w x 4.35m h (14'3"w 14'3"h)
Grid Trap (USL)	=	1175mm x 910mm (3'10" x 3')

Flying System Operated from a raked platform Stage Left at stage level. 52 bars (5 line) single purchase counterweight at 200mm centres (refer to ground plan for small irregularities downstage). 1 lateral (up and downstage) bar each side. All bars are ladder bars with the exception of the House Tabs bar and the lateral bars. We have approximately 7500kgs of counterweight

Bar Length	=	13600mm (44'7")
Bar O.D.	=	48mm
Bar I.D.	=	36mm
Cradle Capacity	=	420Kgs (840Lbs)

Chain Hoists and Truss

	Advance 1	Advance 2	Overstage
Capacity	2 x 1 tonne Points	2 x 1 tonne Points	2 x 1 tonne motors
Lift Height	12m (39' 6") from Stalls Floor	12m (39' 6") from Stalls Floor	18.67m
Dist. From Stage Front	1300mm	3500mm	Varies
Dist. from Centre	5340mm	4000mm	Varies. One usually on grid trap
Rigging	2 x permanently rigged 1 tonne Liftket Chain Hoists and Prolyte H30V Truss (11.68m length)	2 x permanently rigged 1 tonne GIS Chain Hoists and Thomas 40cm Squarelite Truss (11m length)	1 x 1 tonne STAR Liftket Chain Hoist – Dual Speed 1 x 1 Tonne Loadguard Chain Hoist – Dual Speed
Loading	UDL 1100kgs CPL 500kgs	UDL 1300kgs CPL 670kgs	
Notes	BGV D8+ No Secondary Safety Required	BGV D8+ No Secondary Safety Required	Build Motors

Soft Goods The House Tabs are Damson velour with a Silver trim. We have in black serge; borders x 7 , pairs legs x 6, 1 full tab, 1 pair of half-tabs and 1 cyclorama (opera blue), 4 x 7m x 5m ShowLED Chameleon Star Cloths. We also have assorted black serge covered masking flats.

Prompt Corner Prompt desk with cue light system, talk back, paging stage picture and stage infra-red picture on 3 x colour monitors. Facility for MD/Conductor picture also. The prompt desk can be positioned DSL or DSR.

Access Eqpt. Two tallscopes: 1 x 50524 max working height 9.5m (31'), 1 x 50512 max working height 6.4m (21'). Three sets of Zarges: 1 x 9.7m, 1 x 6.9m, 1 x 5.8 m. Various step ladders. 1 Genie GR20, 1 Haulotte Quick Up 12.

Rostra 6 sheets of 2440 x 1220 and one sheet of 1220 x 1220 Litestructures Litedeck and various height legs (280mm, 350mm, 530mm, 710mm).

Piano / Keyboard Kawai Boudoir Grand, Roland RD300SX Keyboard.

LIGHTING

Lighting Desk

ETC Eos TI & ETC Ion, ETC focus remote and WiFi lighting net.

Racks

05 x ETC Sensor Racks, 104 x 15A FOH. 170 x 15A on stage. 18 x 25A on stage. 90 x DMX Operated 10A & 15A Non Dim circuits spread around the Theatre.

D.M.X.

Large network of DMX tie lines spread around the Theatre. In house racks and houselights can be operated from any touring desk using DMX or ETC Ethernet. There are a limited number of scroller tie lines around the building as well.

Ethernet

Cat5 tie lines spread around the Theatre running ETC Net 3 on 3 x 4 way ETC gateways. This infrastructure can be used for touring equipment that requires a Cat5 network. 4 x dedicated Cat 5 tie lines from Stage Right touring rack position to the control rooms.

Follow Spots

There are 3 x Robert Juliat Aramis 2500w HMI Spots positioned in the Spot box at the rear of the circle. There is room and power for four spots in this position. Our normal set up is a spot on each side and one on centre. There is also room for a projector but limited to a 32 amp Single Phase supply. The throw to the front edge of the stage is 29m (95').

Colour & Gobos

We stock most of the Lee and Rosco range of colour. We also have a large stock of Rosco and DHA gobos. We have a large stock of B size gobo holders and Irises for all our profiles.

Dimensions

Circle Front lighting bar to the setting line	10.1m	On Centre
Circle Front lighting bar to back wall of the stage 20.4m	21m	On Centre
Lighting Bridge to Stalls floor	10.56m (34'8")	
Lighting Bridge to front edge of the stage	11.86m (38'10")	
SR Half Rail Lighting bar to stage floor	9.73m	
SL Half Rail Lighting bar to stage floor	8.75m	

Power

	Amps	Phases	Notes
SR DS	300A	3 ϕ	Power Lock, selectable RCD
SR DS	63A	3 ϕ	No RCD
SR DS	32A	3 ϕ	30ma RCD
SR DS	32A	1 ϕ	100ma RCD
SR DS	16	1 ϕ	30ma RCD
SR DS	125A	3 ϕ	selectable RCD
SR US	63A	3 ϕ	selectable RCD
SR US	32A	3 ϕ	selectable RCD
SR US	32A	1 ϕ	selectable RCD
SR US	16A	1 ϕ	selectable RCD
SL US	32A	1 ϕ	30ma RCD
SL DS	125A	3 ϕ	selectable RCD
SL DS	63A	3 ϕ	selectable RCD
SL DS	32A	3 ϕ	selectable RCD
SL DS	63A	1 ϕ	selectable RCD
SL DS	32A	1 ϕ	selectable RCD
SL DS	16A	1 ϕ	selectable RCD
SL DS	32A	3 ϕ	30ma RCD
SL DS Perch	32A	3 ϕ	100ma RCD
SL DS Perch	32A	1 ϕ	100ma RCD
SL DS Perch	63A	3 ϕ	No RCD
Scene Dock	2 x 32A	1 ϕ	30ma RCD
Sub Stage	32A	1 ϕ	30ma RCD
Rack Room SL DS	125A	3 ϕ	No RCD

Pros Booms (Slots)

1 each side. 6.5m vertical ladder bar rated at 50kgs/m. On top of these are two boom arm rigging positions with WLL's of 100kgs and 250kgs. The 250kg points each have a GIS 250kg chain hoist permanently rigged.

SOUND

Desk 64 Channel Yamaha CL5 in the control room at the rear of the stalls. A Yamaha QL1 digital desk is available for onstage use or as required.

Playback Control Room Rack with: Emo Rack Light, 2 x Tascam CD Player, 2 x Mac Mini running QLab Pro Sound.

FOH Speakers

No.	Type	Notes
4	d&b 24S/24SD	2 x 24S on Advance 1' 2 x 24SD)on bottom of pros booms
6	d&b T10	On Advance 1
2	d&b 18S subs	On Advance 1
4	d&b 10S	Rear of Lighting Bridge as circle delays
6	d&b E5	Hung from Circle Front as mid stalls delay
6	d&b E5	Hung from Stalls Ceiling as rear stalls delays
6	d&b E0	In the Stage Front Fascia as front fills
2	d&b21S subs	Front of Substage as sub-bass
All d&b speakers have 10D or 30D power amplifiers.		

Monitors Speakers

No.	Type	Notes
2	d&b max 15"(copies)	Permanently rigged on DS perches
10	d&b Logic LM15	Wedge
6	d&b E8	
4	d&b E6	
2	Yamaha Stagepas 400s	Powered speaker system

Electronic Architecture We have an acoustic enhancement system throughout the auditorium. **CARMEN®** is an interactive system which allows a hall's acoustics to be adapted to suit each type of presentation (plays, operas, concerts) by modifying the period of reverberation. Its principle involves the creation of active virtual walls, composed of a range of cells combining a microphone and loudspeaker, distributed throughout the hall and its ceiling. The system is available for use as desired.

Audio Tie Lines

Dante ethersound network for the CL5. Analogue Tie lines from stage, orchestra pit and sub stage via prompt corner and centre stalls to control room. Additional tie lines from projection room and circle front to prompt corner.

Speaker Tie Lines

To four corner positions onstage, either side of orchestra pit, pros. arch (upper and lower), either side of centre auditorium (stalls & circle), either side of auditorium at rear (stalls & circle) and along circle front. Speaker tie lines are accessed from prompt corner and / or sub stage.

Cable Mics

Make	Type
Shure	8 x SM58 2 x SM57
Sennheiser	2 x MKH 416 2 x ME 40 3 x e904
AKG	4 x SE300-CK 91 2 x SE300-CK 93 2 x P170
Audix	1 x D6
Audio Technical	1 x AT8570 lect
Crown	4 x pcc 160

Radio Mics.

20 Sennheiser 500 series G3 Radio Microphones. All radio mics have body pack transmitters. We have 8 Shure handheld transmitters with Beta58, Beta87, KSM9, also 2 skp 2000 plug on transmitters. A fixed site licence is held to cover the frequencies listed below in the Ch41 & Ch43 group and the Channel 38 shared group. There are 2 x Sennheiser I.E.M. (GB) Systems and 6 additional receivers on.

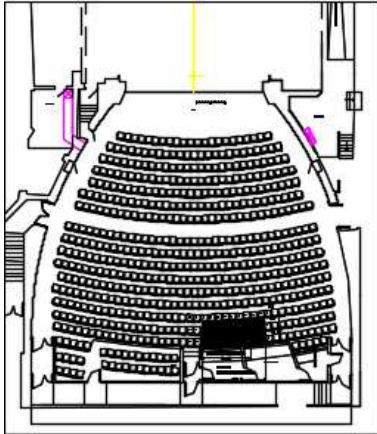
Incoming Fixed Site Licence				
630.100	631.675	634.300	636.750	646.000
630.550	632.350	635.025	637.775	823.826
631.075	633.125	635.925	622.000	826.832

Comms.

Paging system to all backstage areas including show relay. Paging to FOH. Stage intercom to all positions, provided by 2 channel Clear-com system, with facility for Radio Cans on 1 channel. 6 x HME Radio Cans running on Channel 1 of wired Comms. We also have a Motorola system with 12 walkie talkies some of which are available for use by touring companies. These are duplexes with channel one of the Clear-com system.

Touring Mixer

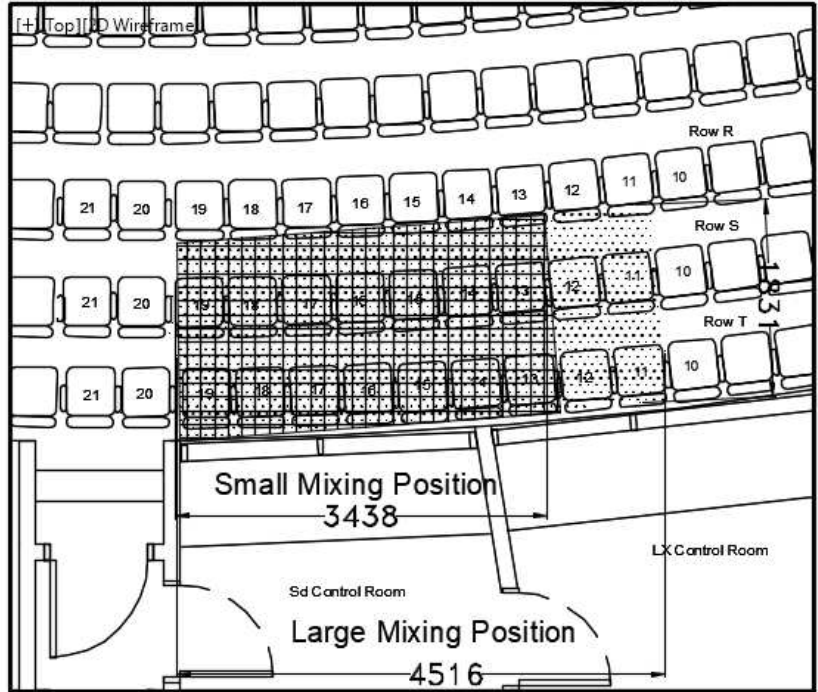
Small and Large positions available. Both positions involve seat removal (up to 14 small & 21 large) and your preferred position should be specified in your contract. Either position may also accommodate touring lighting desks if required. A multi trap runs in the floor on the auditorium right (approx. 40m.). There is access to in-house tie lines (72) via our rear stalls control room. Intercom and cue lights available at both positions.



Notes

If a row is blocked then seats 20-21 have to be removed to allow access through the rear centre door.

No single exit row can have more than twelve seats so only seats to auditorium left can be given back to box office.



Drawn by	WHL HILL	File Name	Draw	Scale	Not to Scale
Production Title		Drawing Title	Mixing Positions Plan		
		Version	NTR		

VIDEO

Video Tie Lines

Available in both wings up and downstage, Pit, Lighting and Sound Control Rooms, circle front and centre stalls (plotting) position. All sources patchable.

Stage Picture

Colour picture available in most dressing rooms via television sets, on the prompt desk and on large screen monitors in each wing. Prompt desk, lighting control, sound control and fly rail (stage left wing) monitors can be switched to black & white infra-red aided picture.

Pit Monitors

3 x 12" monitors. Stage, Infra-red and Conductor picture available.

Cameras

Permanent Mount Colour & Black / White (Infra-red) cameras on circle Further Colour Camera also available for pit or stage use. Permanent LED Infra-red light mounted on the Circle Front.

EQUIPMENT LIST.

The equipment listed below is available for your use as specified in your contract. The standard contract allowance is shown in the relevant column. Any non-contracted equipment requested, specified or required will be charged back to the production via the contra at the rates listed.						
Lighting Equipment	Standard Contract	Stock	Hire Charges (ex V.A.T.)		Updated Notes	26.09.19
			Per Day	Per Week		
ETC Source Four 750w Fixed Beam	22 FOH 12 Stage	104	£6.00	£12.00	16 x 36°, 16 x 50°, 30 x 26°, 28 x 19°, 06 x 70°, 6 x 90°, 2 x 14°. 20 x 19° & 20 x 26° are normally rigged FOH.	
ETC Colour-Source LED Profile Fixed Beam		28	£7.00	£14.00	Various Lenses available, 12 = Deep Blue, 16 Standard	
ETC Source Four Lustr+ LED Profile		06	£8.00	£16.00	Various Lenses available	
Strand Cantata F / PC 1200w.	2 FOH 20 Stage	10	£4.00	£8.00		
Strand Cantata PC 1200w.		40	£4.00	£8.00		
Strand Iris Four Flood. 4 x 1000w.		5	£12.00	£24.00		
Philips, SL e-STRIP 10		10	£10.00	£20.00		
Thomas Par 64 Can 60, 61, 62. 1000w.	24	150	£3.50	£7.00		
ETC Color-Source LED Pars		46	£6.00	£12.00	18 = Deep Blue, 28 Standard	
Thomas Floor Cans 60, 61, 62. 1000w.	4	12	£4.00	£8.00		
Strand Alto Fresnel. 2000w		6	£9.00	£18.00		
Mirror Ball and rotators.		2	£12.00	£24.00	2 x 500mm (20") diameter	
Look Solutions Viper NT Smoke Machine.		4	£25.00	£50.00	price includes fluids	
Jem AF1 DMX Fans.		4	£18.00	£36.00		
Look Solution Unique Haze Machine.		4	£25.00	£50.00	Price includes fluids	
Conductor twin music stand		1	£8.00	£16.00		
Music Stands Rat Type.		14	£4.00	£8.00		
Lighting Stands (4'6")		8	£1.25	£2.50		
Lighting Stands large		2	£2.00	£4.00		
Lighting Ladders.		8	£6.00	£12.00		
Martin Mac Aura XB LED Wash Lights		6	£35.00	£70.00		
Brite Q BT-Orbit LED Wash Lights		8	£30.00	£60.00		
Chauvet Rogue™ R1 Spot		4	£35.00	£70.00		
Mac Encore performance Cool White LED Profile		4	£40.00	£80.00		
Mini Booms, with 4 Pars		8	£35.00	£52.00		
UV Cannon		5	£12.00	£24.00		
Gobo Holders for ETC Profiles		50	£1.50	£3.00		
Iris for ETC Profiles		16	£4.00	£8.00		
Red Rad (Heaters)		6	£6.00	£12.00		
Audio and Video Equipment						
CD Player	1	2	£8.00	£16.00		
Wedge Speakers	2	10	£5.00	£10.00		
Small Powered Speaker - Yamaha MPSS		4	£5.00	£10.00		
Cable Microphones (Dynamic)	6	8	£4.50	£9.00	Details in 'Sound' section	
Cable Microphones (instrument)		QTY	£6.00	£12.00	Details in 'Sound' section	
Radio Mics (standard mic. head)		22	£30.00	£60.00	Details in 'Sound' section	
D.I. Boxes	1	8	£3.50	£7.00		
Float Mics		3	£6.00	£12.00	Crown PCC 160	
CCTV Camera		4	£10.00	£20.00		
17" Screen Monitor	5	2	£10.00	£20.00		
Panasonic Dx100 projector		1	£100.00	£400.00	Standard and 0.85 lens, hanging frame.	
Intercom Belt Pack & Headset		12	£4.00	£8.00		
Motorola CP040 16Ch Radio's		12	£10.00	£20.00	Duplex Radio Walkie Talkie system	
Radio Cans		6	£15.00	£30.00	HME System	
Stage Equipment						
Black Serge Border / Black Serge Legs (Pair)	5	6	£10.00	£20.00		
Black Serge Tab	1	1	-	-		
Black Serge Half Tabs		1	£15.00	£30.00		
Black Gauze		1	£18.00	£36.00		
ShowLED Chameleon Star Cloth		1	£65.00	£130.00		
Cyclorama		1	-	-		
Litedeck (2440 x 1220)		6	£9.00	£18.00		

HEALTH and SAFETY

Policy:

The Theatre Royal Health and Safety Policy are available upon request at Stage Door.

C.D.M:

Should the staging of your production involve any “Construction” work you will need to fulfill your responsibilities under the Construction Design and Management Regulations 2015.

Paperwork:

To satisfy statutory regulations and our license conditions we require information and relevant risk assessments if your production involves any activity that may cause significant risk. This may include but not be limited to; pyrotechnics, firearms, swords, naked flame, water, hazardous substances, personnel flying, special effects, lasers, strobes, animals and children. Should you have identified any “significant risk” you should copy us into any current risk assessments and relevant control measures or method statements.

You should also ensure that you have current certification for any equipment that requires it, i.e. P.A.T., Lifting Gear, Flame Proofing, in case you are requested to produce them either by ourselves or by the licensing authority.

Smoking on Stage:

If it is appropriate for the “artistic integrity” of the performance for a performer to smoke during a production then we will require; prior notification, a letter of justification, evidence that you have consulted your employees / voluntary workers and of course appropriate risk assessments that deal with both exposure to smoke and safe use and disposal of naked flame etc.

Fire Safety:

All scenery used on stage must be maintained flame retardant. All curtains or drapes should be of a durably or inherently flame retardant fabric and should conform to BS. 5266 Part1: 1988. As a guideline any sheet material less than 18mm (3/4”) thick and timber less than 22mm nominal thickness should be treated to Class 1 (BS. 467 Part 7).

In line with current U.K. Regulations there is no smoking allowed within the building (except as part of a performance – see above).

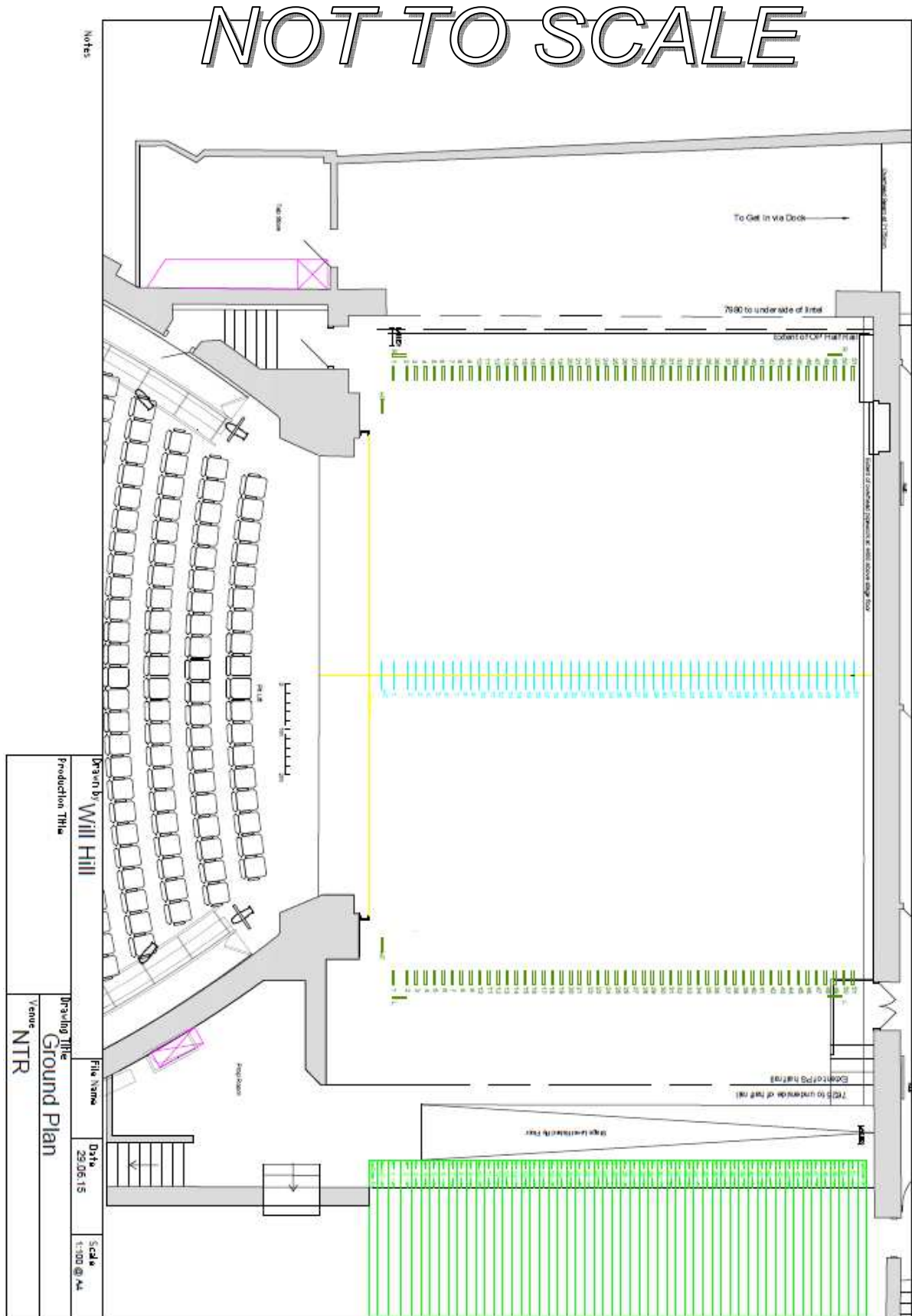
Working Areas:

You are contractually obliged to ensure that no technical work is carried out in any area unless there is proper supervision or permission given by the Resident Manager’s staff and that the touring company work within any relevant guidelines set out in the Resident Manager's safe working procedures and risk assessments.

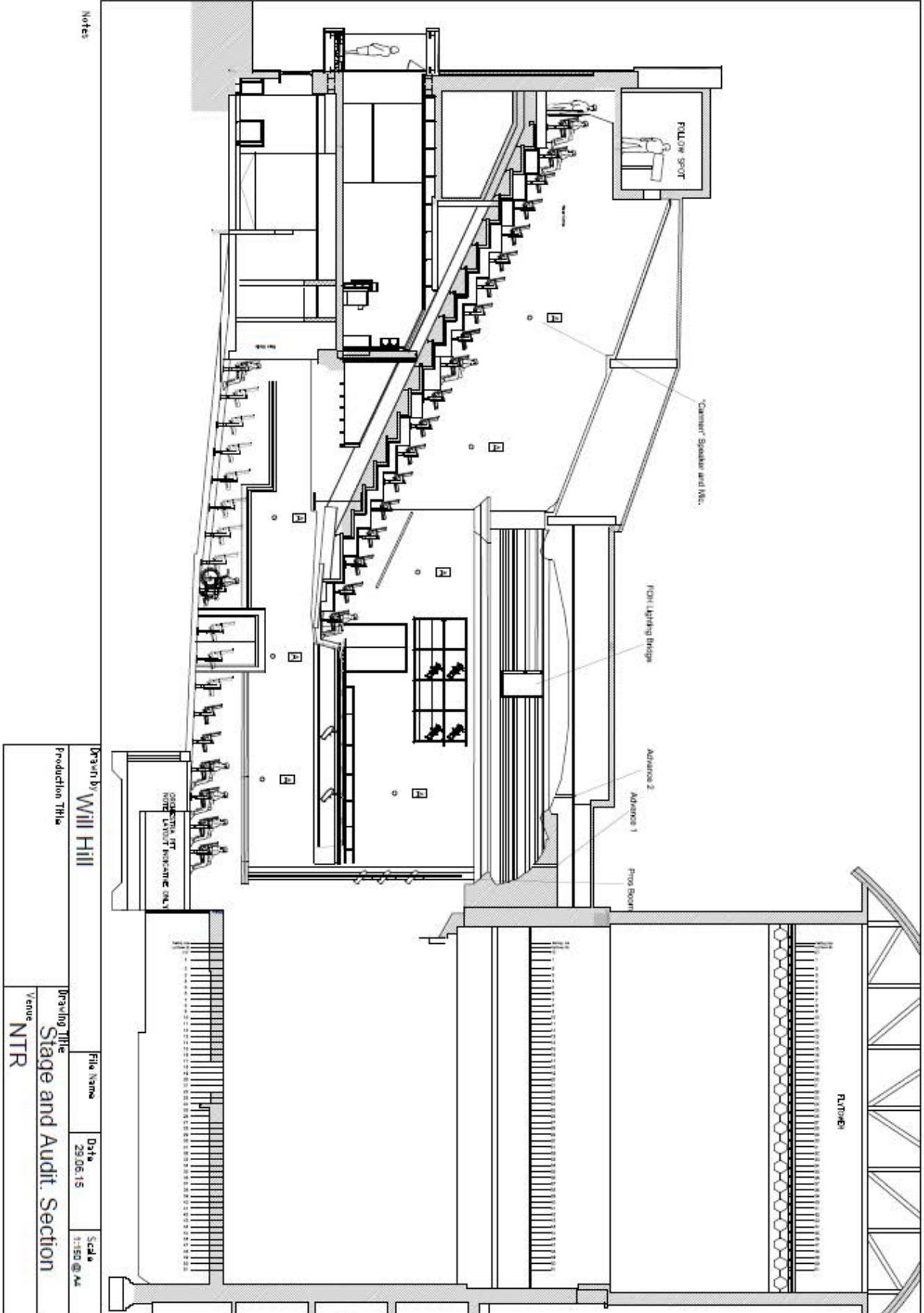
We reserve the right to roster staff additional to your requirement if we judge that the staffing levels requested do not meet minimum safety requirements for any technical works planned or occurring.

Plans

The plans below are **NOT TO SCALE**. Scaled Plans in .dwg and .pdf format are available as downloads from the Theatre Royal website.



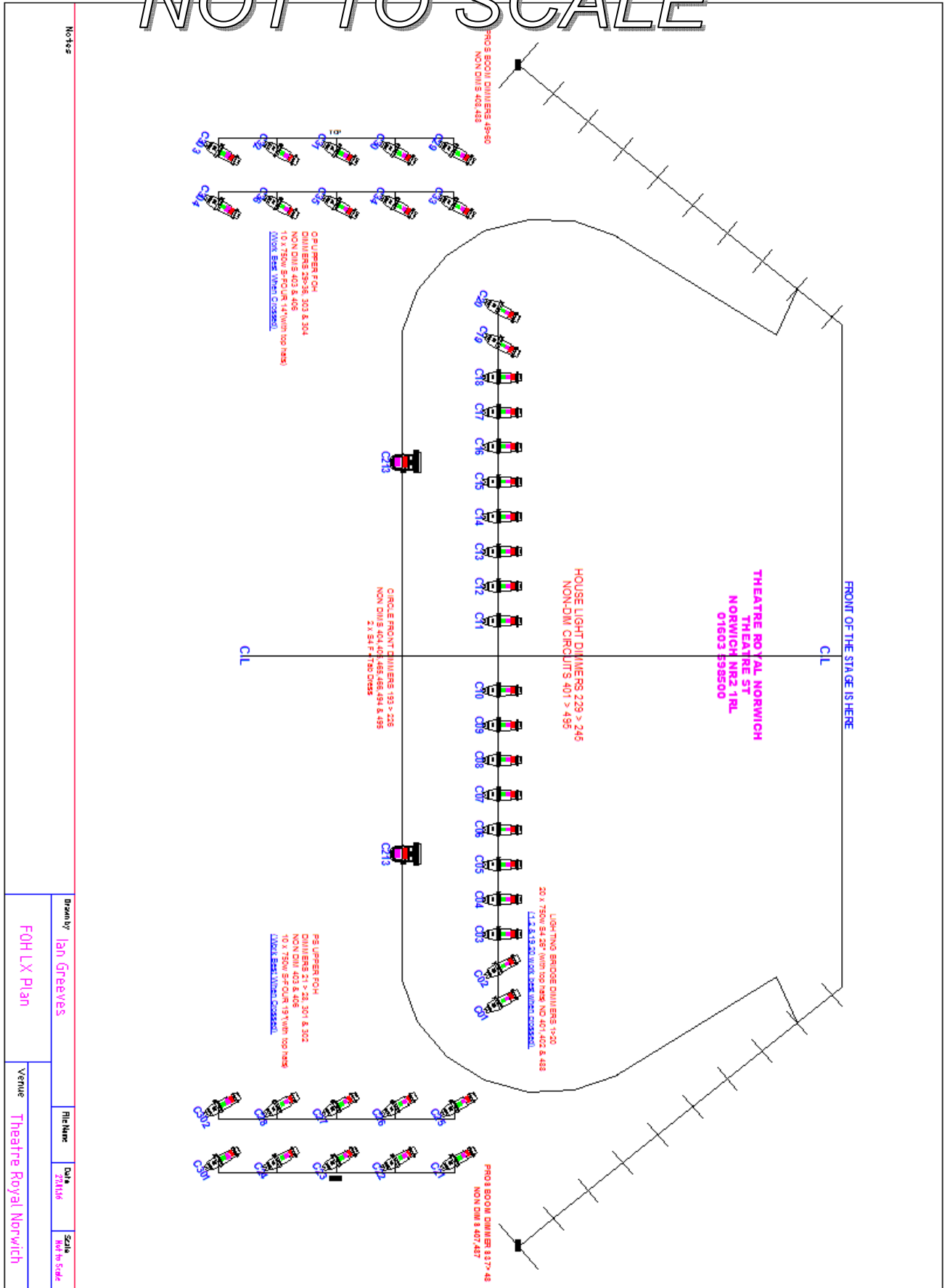
NOT TO SCALE



Notes:

Drawn by	Will Hill
Production Title	
Drawing Title	Stage and Audit. Section
Venue	NTR
File Name	
Date	29.06.15
Scale	1:50 @ A4

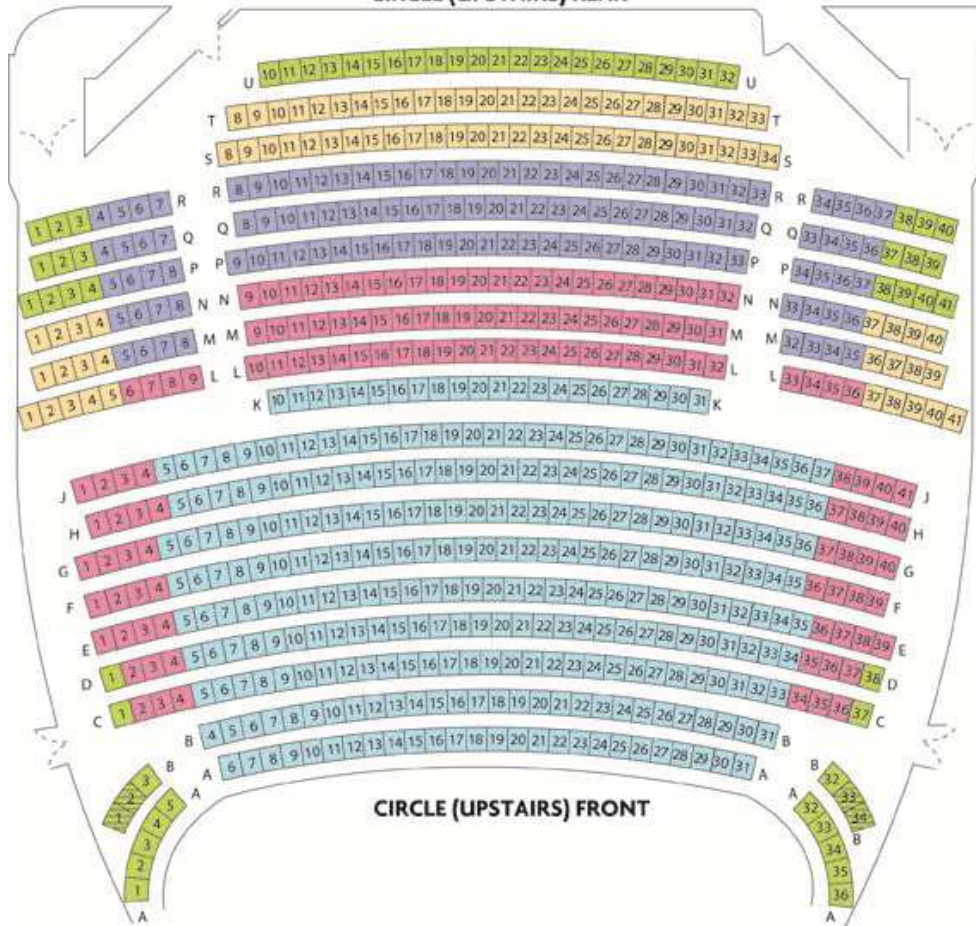
NOT TO SCALE



Notes

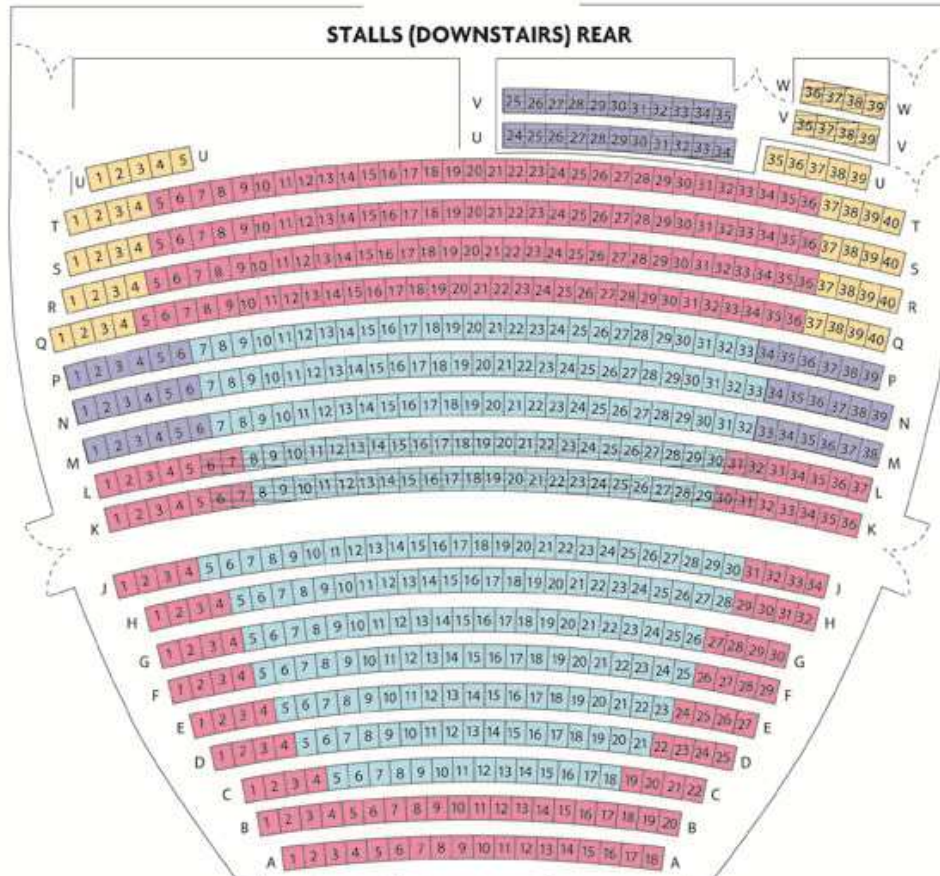
Drawn by	Ian Greeves	File Name	CLX	Scale	1/4" = 1'-0"
FOH LX Plan		Venue	Theatre Royal Norwich		

CIRCLE (UPSTAIRS) REAR



CIRCLE (UPSTAIRS) FRONT

STALLS (DOWNSTAIRS) REAR



STALLS (DOWNSTAIRS) FRONT

ORCHESTRA PIT

HANGING PLOT

VENUE **Theatre Royal Norwich**

Distance from Setting Line			BAR	PIECE	FLIES	KGS	LBS	NOTES	Width	Drop
Imperial	Metric	L								
Feet	Inches	mm	L							
1'	2"	345	TABS							
1'	11"	590	1							
2'	9"	840	2							
3'	5"	1040	3							
4'	1"	1240	4							
4'	9"	1440	5							
5'	5"	1640	6							
6'	0"	1840	7							
6'	8"	2040	8							
7'	4"	2240	9							
8'	0"	2440	10							
8'	8"	2640	11							
9'	4"	2840	12							
9'	12"	3040	13							
10'	8"	3240	14							
11'	3"	3440	15							
11'	11"	3640	16							
12'	7"	3840	17							
13'	3"	4040	18							
13'	11"	4240	19							
14'	7"	4440	20							
15'	3"	4640	21							
16'	0"	4840	22							
16'	6"	5040	23							
17'	2"	5240	24							
18'	0"	5440	25							
18'	6"	5640	26							
19'	2"	5840	27							
19'	10"	6040	28							
20'	6"	6240	29							
21'	2"	6440	30							
21'	9"	6640	31							
22'	5"	6840	32							
23'	1"	7040	33							
23'	9"	7240	34							
24'	5"	7440	35							
25'	1"	7640	36							
25'	9"	7840	37							
26'	5"	8040	38							
27'	0"	8240	39							
27'	8"	8440	40							
28'	4"	8640	41							
29'	0"	8840	42							
29'	8"	9040	43							
30'	4"	9240	44							
30'	12"	9440	45							
31'	8"	9640	46							
32'	3"	9840	47							
32'	11"	10040	48							
33'	7"	10240	49							
34'	3"	10440	50							
34'	11"	10640	51							
Hemp	Wall		H							
			R							
Total Flying Load					0	Kgs				
Bar Capacity = 420kgs										
Setting Notes										
NB. Stage Front to setting line - 1.00m/3' 7"										